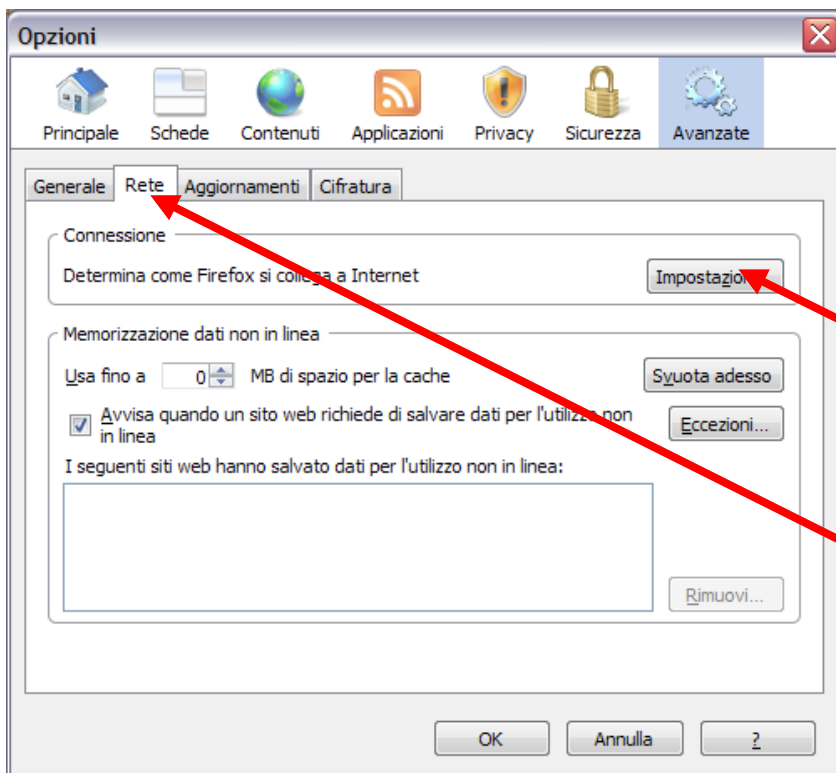
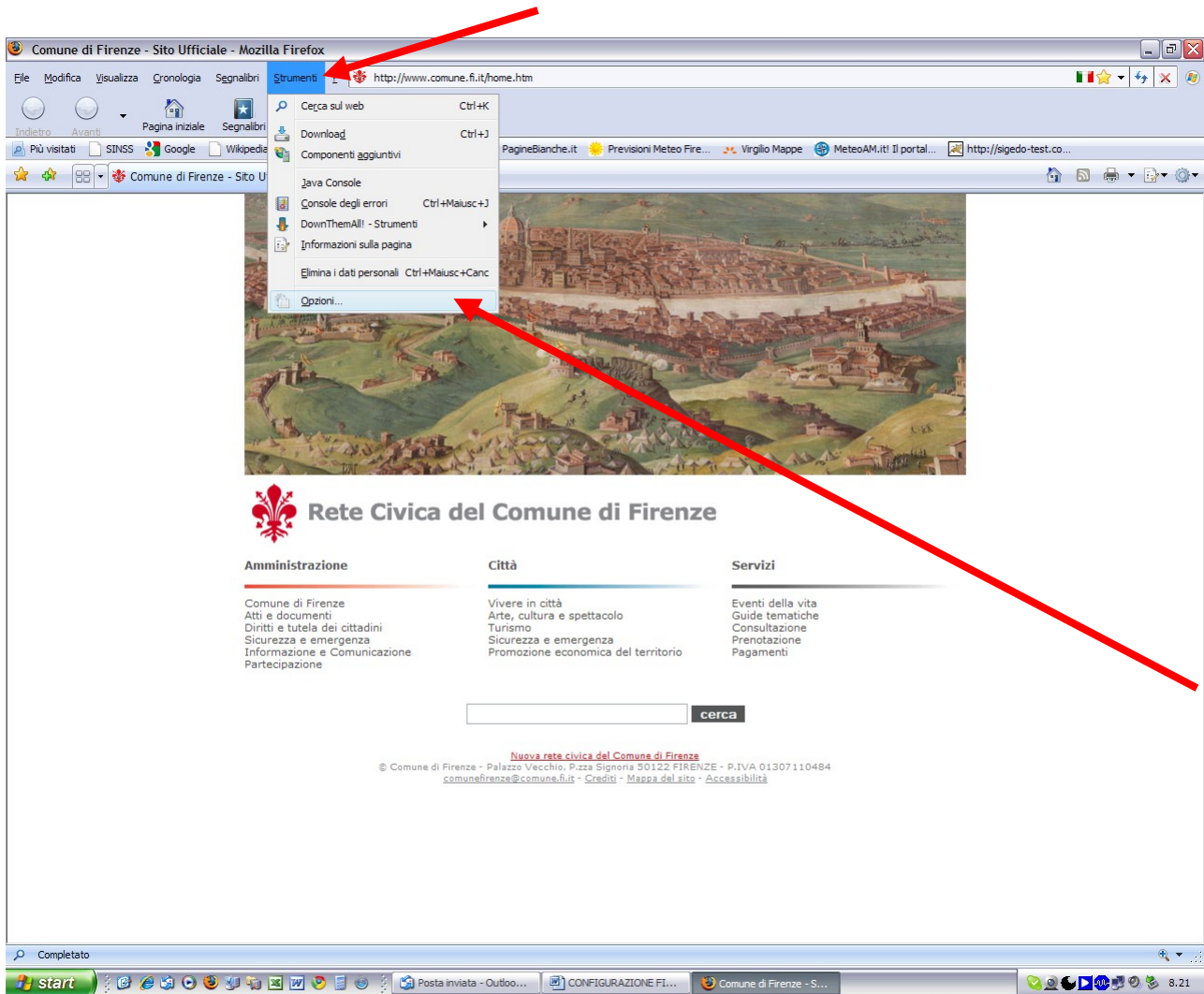


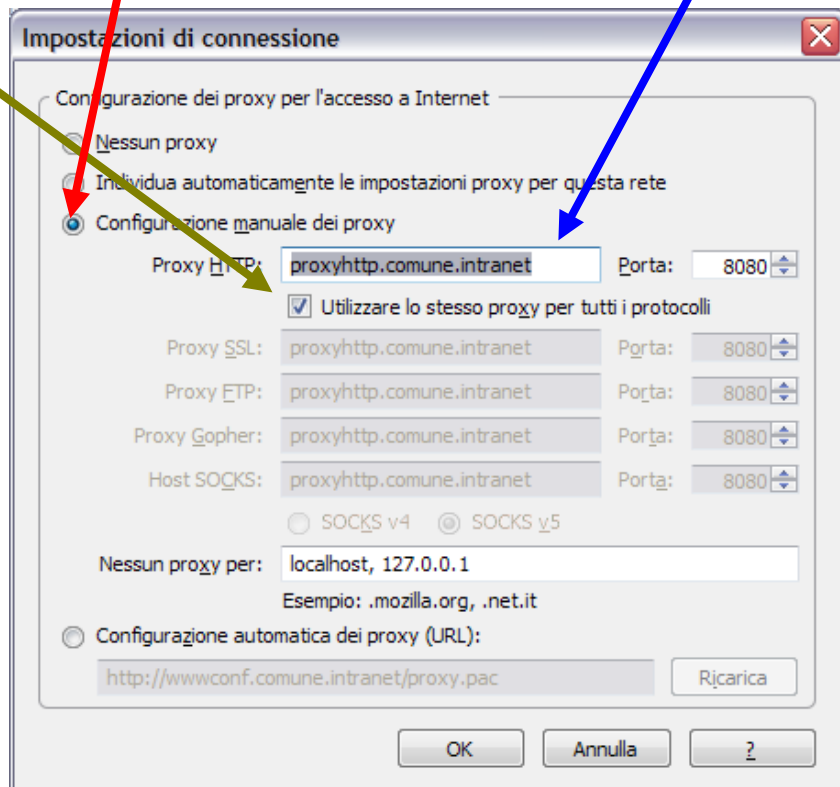
# CONFIGURAZIONE MOZILLA FIREFOX PER SINSS



SPUNTARE **Configurazione manuale proxy**

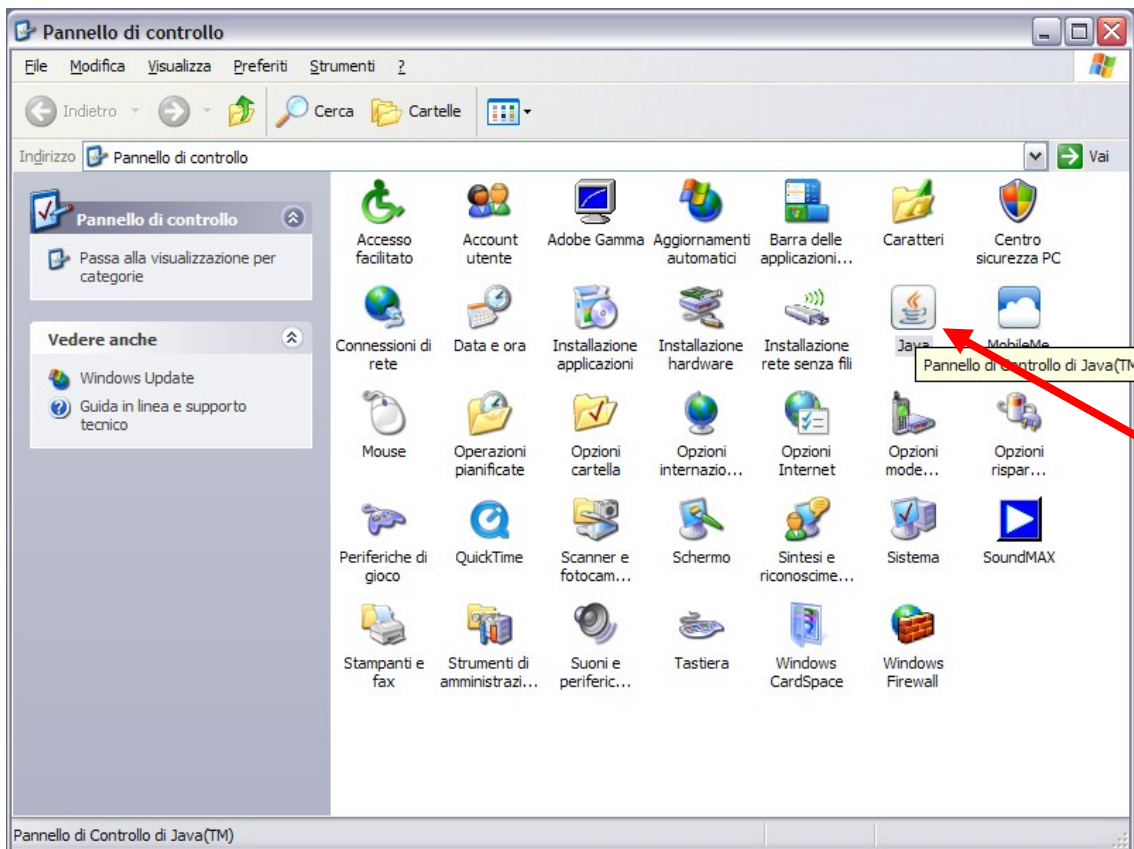
Proxy http:: proxyhttp.comune.intranet Porta: 8080

SPUNTARE **Utilizzare lo stesso proxy per tutti i protocolli**



CONFIGURAZIONE FIREFOX TERMINATA

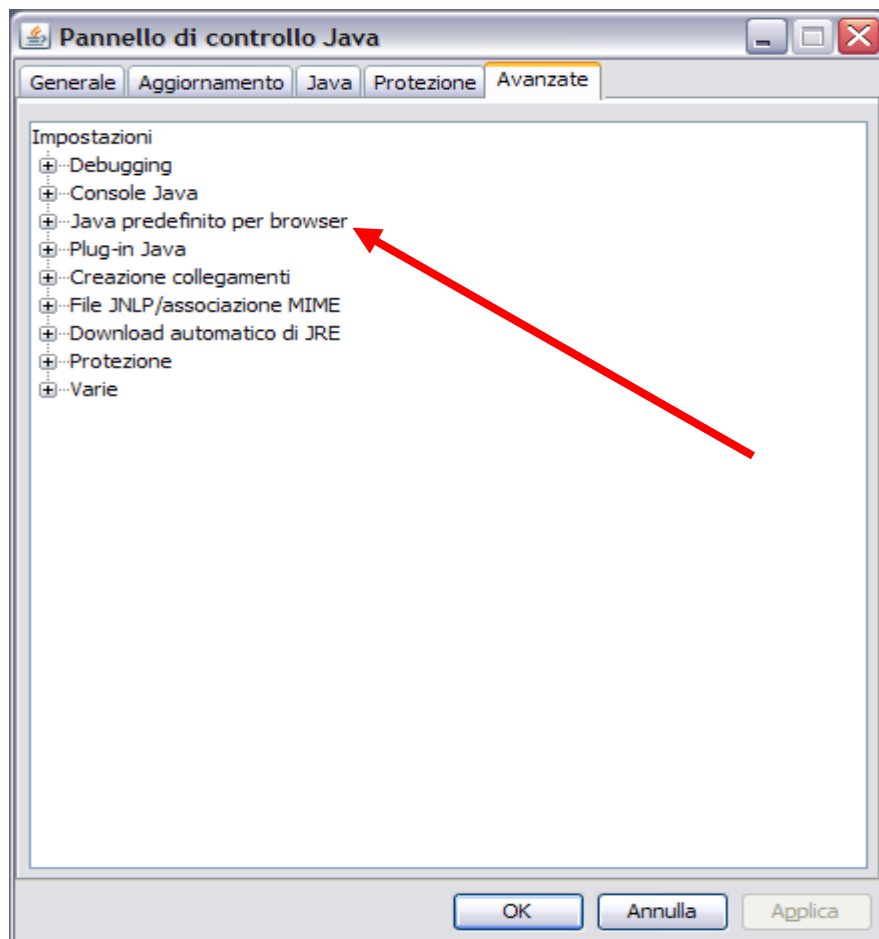
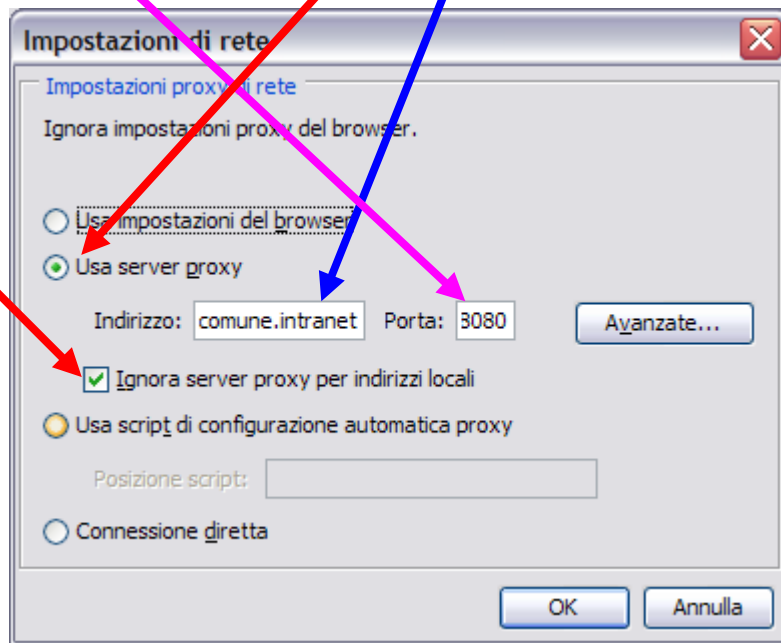
## CONFIGURAZIONE JAVA DAL PANNELLO DI CONTROLLO DI WINDOWS

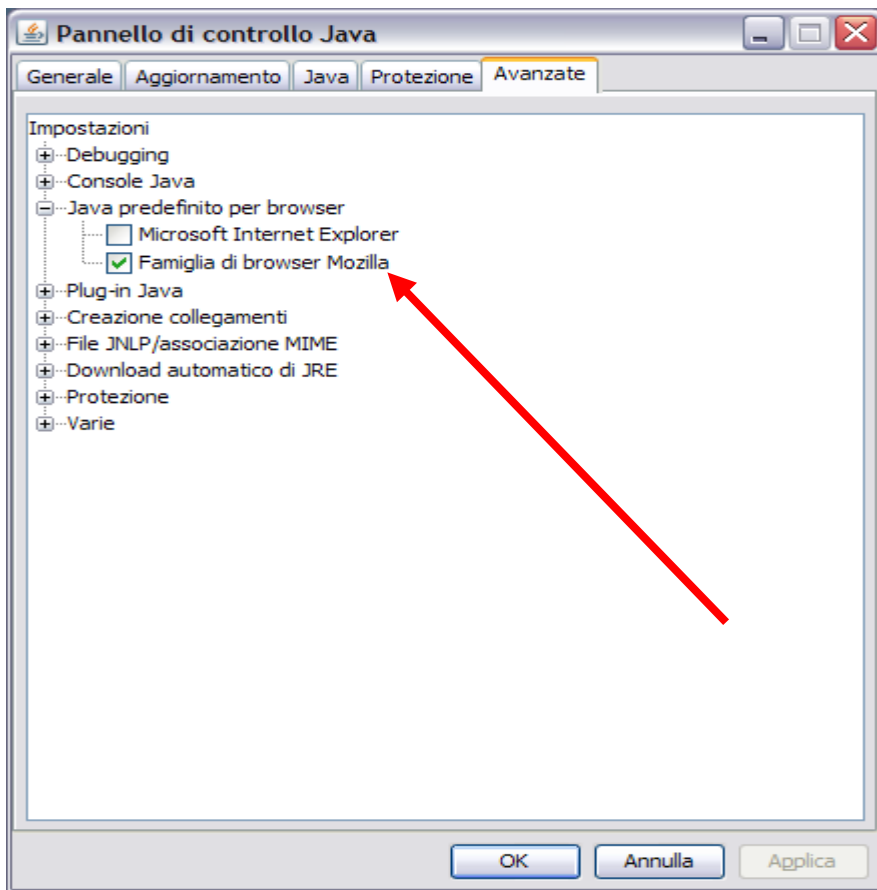


SPUNTARE **Usa server proxy**

Indirizzo: proxyhttp.comune.intranet

Porta: 8080





FINE CONFIGURAZIONE JAVA PER SINSS